

**CHASELECTION****Recombinant Mouse M-CSF/CSF1****货号(Catalog Number):** CY140FXXXX(L)**别名(synonym):** colony stimulating factor 1 (macrophage); CSF1; CSF-1; MCSF; M-CSF**来源(Source):** Human embryonic kidney cell, HEK293-derived Mouse M-CSF protein**蛋白结构 (Structure):**

该蛋白不含标签

**基因 ID:** P07141**氨基酸序列:**

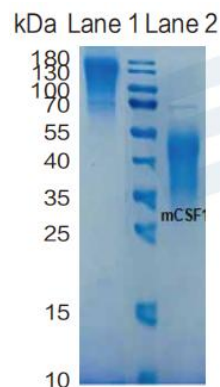
Lys33-Glu262

**分子量大小(MW):**

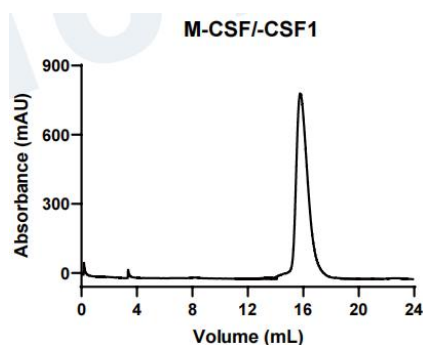
26 kDa(Monomer)

**纯度 (Purity) :**

&gt; 95%, determined by SDS-PAGE.

**SDS-PAGE**

4 ug/lane protein was resolved with SDS-PAGE under non-reducing (NR) and reducing (R) conditions and visualized by Coomassie Blue staining.

**Gel filtration**

Size-exclusion chromatography of recombinant mouse M-CSF/CSF1 protein (280 nm absorbance)



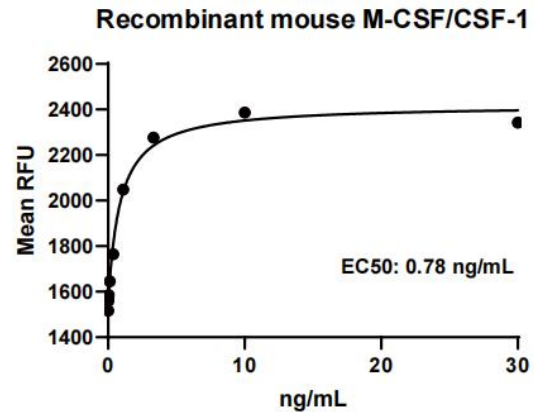
**内毒素含量(Endotoxin):** <0.010 EU per 1 ug of the protein by the LAL method.

**制剂(Formulation):**

Solution protein.

Dissolved in sterile PBS buffer.

This solution can be diluted into other aqueous buffers. Centrifuge the vial prior to opening.

**活性检测 (Biological Activity) :**

Recombinant mouse M-CSF/CSF1 stimulates cell proliferation of M-NFS-60 mouse myelogenous leukemia lymphoblast cells.

**储存与运输(Storage):**

Use a manual defrost freezer and avoid repeated freeze-thaw cycles.

It is recommended that the protein be aliquoted for optimal storage.

36 months from date of receipt, -20 to -70 °C as supplied.

**产品背景介绍 (Production):**

Macrophage Colony Stimulating Factor(M-CSF), also known as CSF-1, is a four-alpha -helical-bundle cytokine that is the primary regulator of macrophage survival, proliferation and differentiation. M-CSF protein is also essential for the survival and proliferation of osteoclast progenitors. M-CSF also primes and enhances macrophage killing of tumor cells and microorganisms, regulates the release of cytokines and other inflammatory modulators from macrophages, and stimulates pinocytosis. M-CSF increases during pregnancy to support implantation

上海逐典生物科技有限公司

上海市闵行区东川路 555 号丙楼 3037 室

www.chaselection.com

and growth of the

decidua and placenta. Sources of M-CSF include fibroblasts, activated macrophages, endometrial secretory epithelium, bone marrow stromal cells and activated endothelial cells. The M-CSF receptor (c-fms) transduces its pleotropic effects and mediates its endocytosis. The first 229 aa of mature mouse M-CSF shares 87%, 83%, 82% and 81% aa identity with corresponding regions of rat, dog, cow and human M-CSF, respectively. Human M-CSF is active in the mouse, but mouse M-CSF is reported to be species-specific.

